

PRODUCT CATALOGUE MARINE 2021

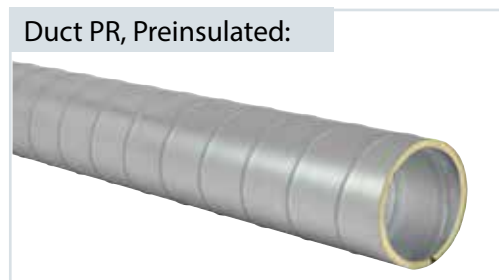


TABLE OF CONTENTS

| | |
|-------------------------|--------------------|
| Page 4 | Ducts |
| Page 5 | Hangers |
| Page 6 | Bend 90° / 45° |
| Page 7 | Bend 30° / 15° |
| Page 8 | Bend 60° |
| Page 9 | T-Branch |
| Page 10 | Reducer PF |
| Page 11 | Reducer PE |
| Page 12 | Connectors |
| Page 13 | Dampers |
| Page 14 | Collar pipes |
| Page 15 | Ducts Un-insulated |
| Page 16 | Bend 90°/60°/45° |
| Page 17 | Bend 30°/15° |
| Page 18 | T-Branch |
| Page 19 | Reducers D1/D3 |
| Page 20 | Connectors M/N |
| Page 21 | Dampers |

Duct PR, Preinsulated:

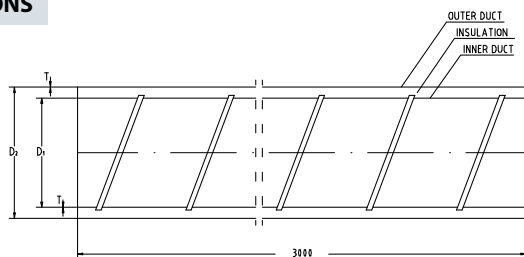
| Item no | Type | D1 | D2 | T outer duct | T inner duct | Kg/m | L | Marks |
|----------|--------|--------------------|------------------|--------------|--------------|------|------|-------|
| 1453-801 | PR-080 | ø80.5 +/- 0.0/0.5 | ø112.5 +/- 0/0.5 | 0,42 | 0,42 | 2,5 | 3000 | |
| 1453-803 | PR-100 | ø100.5 +/- 0.0/0.5 | ø132.5 +/- 0/0.5 | 0,42 | 0,42 | 3,2 | 3000 | |
| 1453-805 | PR-125 | ø125.5 +/- 0.0/0.5 | ø158.6 +/- 0/0.6 | 0,42 | 0,42 | 3,5 | 3000 | |
| 1453-807 | PR-160 | ø160.6 +/- 0.0/0.6 | ø194.7 +/- 0/0.7 | 0,42 | 0,42 | 4,4 | 3000 | |
| 1453-701 | PR-180 | ø180.7 +/- 0.0/0.7 | ø200.7 +/- 0/0.8 | 0,5 | 0,42 | 5,1 | 3000 | * |
| n/a | PR-180 | ø180.7 +/- 0.0/0.7 | ø212.7 +/- 0/0.8 | 0,5 | 0,42 | 5,4 | 3000 | ** |
| 1453-809 | PR-200 | ø200.7 +/- 0.0/0.7 | ø232.8 +/- 0/0.8 | 0,5 | 0,5 | 6,2 | 3000 | |
| 1453-811 | PR-250 | ø250.8 +/- 0.0/0.8 | ø282.8 +/- 0/0.8 | 0,5 | 0,5 | 7,5 | 3000 | *** |



Marks:

- * Only for southern Europe
- ** On request
- *** Limited access from stock

DIMENSIONS



DESCRIPTION

PR is a jacketed circular duct made of galvanized steel sheet and insulated with 16mm mineral wool. The fittings and pipes are ready for assembling as the fittings are supplied with a sealed rubber-ring to ensure tightness.

ORDERING

PR aaa

Product code

Type _____

Dim _____

About Ventiståls preinsulated and uninsulated air pipe/duct work systems

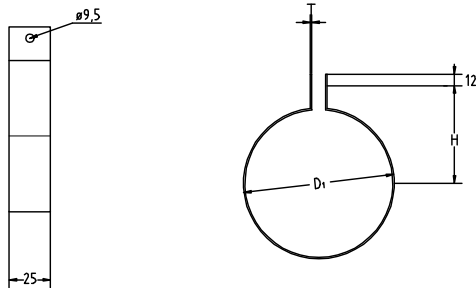
Ventiståls preinsulated and uninsulated air pipe/duct work systems are produced according to standards, rules and regulations. The preinsulated circular ducts and fittings are made from galvanized steel sheet with a layer of 16 mm mineral wool between. The insulation together with inner and outer skin provides an excellent guarantee against heat loss and condensation in the cooling period.

The fittings and pipes are ready for assembling as the fittings are supplied with sealing rubber-ring to ensure tightness.

Hanger PH, for preinsulated duct work:

| Item no | Type | D1 | H | T | Kg | Marks |
|----------|------------|--------|-----|------|------|-------|
| 1453-771 | PH-080 | ø112.5 | 76 | 1.25 | 0.08 | |
| 1453-772 | PH-100 | ø132.5 | 86 | 1.25 | 0.10 | |
| 1453-773 | PH-125 | ø158.6 | 100 | 1.25 | 0.12 | |
| 1453-774 | PH-160 | ø194.7 | 118 | 1.60 | 0.15 | |
| 1546-863 | PH-180/200 | ø202,8 | 128 | 1,60 | 0,23 | |
| n/a | PH-180/212 | ø212,8 | 128 | 1,60 | 0,25 | ** |
| 1453-775 | PH-200 | ø232.8 | 138 | 1.60 | 0.27 | |
| 1453-776 | PH-250 | ø282.9 | 163 | 1.60 | 0.34 | |

Hanger PH

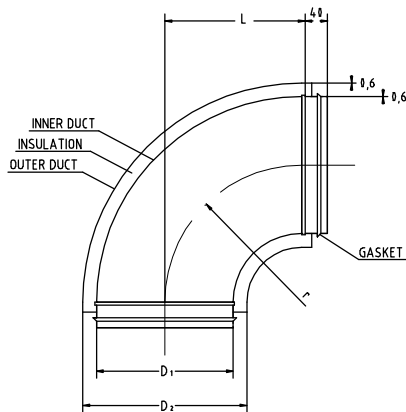
**DIMENSIONS****ORDERING**

Product code _____ PH aaa
 Type _____
 Dim _____

BEND PB 90°, Preinsulated:

| Item no | Type | D1 | D2 | L | Kg | Marks |
|----------|--------|--------------------|--------------------|-----|------|-------|
| 1453-742 | PB-080 | ø 78.8 +/- 0.5/0.0 | ø109.0 +/- 1.0/0.0 | 110 | 0,7 | |
| 1453-746 | PB-100 | ø 98.8 +/- 0.5/0.0 | ø129.0 +/- 1.0/0.0 | 100 | 0,85 | |
| 1453-747 | PB-125 | ø123.8 +/- 0.5/0.0 | ø155.0 +/- 1.0/0.0 | 125 | 1,25 | |
| 1453-748 | PB-160 | ø158.7 +/- 0.6/0.0 | ø190.0 +/- 2.0/0.0 | 160 | 1,8 | |
| 1453-707 | PB-180 | ø178.6 +/- 0.7/0.0 | ø198.0 +/- 2.0/0.0 | 180 | 2,2 | * |
| n/a | PB-180 | ø178.6 +/- 0.7/0.0 | ø209.0 +/- 2,0/0.0 | 180 | 2,7 | ** |
| 1453-749 | PB-200 | ø198.6 +/- 0.7/0.0 | ø229.0 +/- 2.0/0.0 | 200 | 2,9 | |
| 1453-913 | PB-250 | ø248.5 +/- 0.8/0.0 | ø279.0 +/- 2.0/0.0 | 250 | 3,8 | *** |

Bend PB 90°, Preinsulated

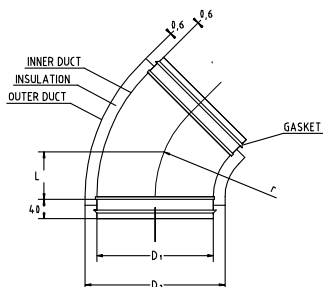
**DIMENSIONS****ORDERING:**

Product code _____ PB-90 aaa
 Type _____
 Dim _____

BEND PB 45°, Preinsulated:

| Item no | Type | D1 | D2 | L | Kg | Marks |
|----------|--------|--------------------|--------------------|-----|------|-------|
| 1453-739 | PB-080 | ø 78.8 +/- 0.5/0.0 | ø109.0 +/- 1.0/0.0 | 40 | 0,45 | |
| 1453-741 | PB-100 | ø 98.8 +/- 0.5/0.0 | ø129.0 +/- 1.0/0.0 | 41 | 0,5 | |
| 1453-743 | PB-125 | ø123.8 +/- 0.5/0.0 | ø155.0 +/- 1.0/0.0 | 52 | 0,9 | |
| 1453-744 | PB-160 | ø158.7 +/- 0.6/0.0 | ø190.0 +/- 2.0/0.0 | 66 | 1,1 | |
| 1453-706 | PB-180 | ø178.6 +/- 0.7/0.0 | ø198.0 +/- 2.0/0.0 | 76 | 1,4 | * |
| n/a | PB-180 | ø178.6 +/- 0.7/0.0 | ø209.0 +/- 2,0/0.0 | 76 | 1,5 | ** |
| 1453-745 | PB-200 | ø198.6 +/- 0.7/0.0 | ø229.0 +/- 2.0/0.0 | 83 | 1,7 | |
| 1453-912 | PB-250 | ø248.5 +/- 0.8/0.0 | ø279.0 +/- 2.0/0.0 | 104 | 2,3 | *** |

Bend PB 45°, Preinsulated

**DIMENSIONS****DESCRIPTION**

PB is a double-jacketed circular bend made of galvanized steel sheet and insulated with 16mm mineral wool. The fittings and pipes are ready for assembling as the fittings are supplied with sealed rubber-ring to ensure tightness.

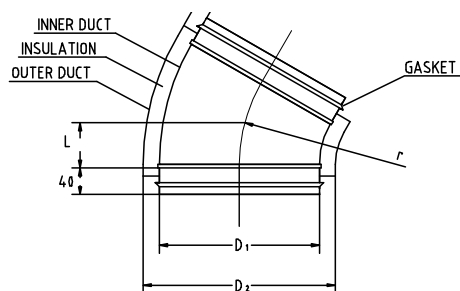
ORDERING:

Product code _____ PB-45 aaa
 Type _____
 Dim _____

BEND PB 30°, Preinsulated:

| Item no | Type | D1 | D2 | L | Kg | Marks |
|----------|--------|--------------------|--------------------|----|------|-------|
| 1453-734 | PB-080 | ø 78.8 +/- 0.5/0.0 | ø109.0 +/- 1.0/0.0 | 22 | 0,36 | |
| 1453-735 | PB-100 | ø 98.8 +/- 0.5/0.0 | ø129.0 +/- 1.0/0.0 | 27 | 0,42 | |
| 1453-736 | PB-125 | ø123.8 +/- 0.5/0.0 | ø155.0 +/- 1.0/0.0 | 34 | 0,60 | |
| 1453-737 | PB-160 | ø158.7 +/- 0.6/0.0 | ø190.0 +/- 2.0/0.0 | 43 | 0,8 | |
| 1453-705 | PB-180 | ø178.6 +/- 0.7/0.0 | ø198.0 +/- 2.0/0.0 | 48 | 1,1 | * |
| n/a | PB-180 | ø178.6 +/- 0.7/0.0 | ø209.0 +/- 2,0/0.0 | 48 | 1,2 | ** |
| 1453-738 | PB-200 | ø198.6 +/- 0.7/0.0 | ø229.0 +/- 2.0/0.0 | 54 | 1,4 | |
| 1453-911 | PB-250 | ø248.5 +/- 0.8/0.0 | ø279.0 +/- 2.0/0.0 | 61 | 2,0 | *** |

Bend PB 30°, Preinsulated

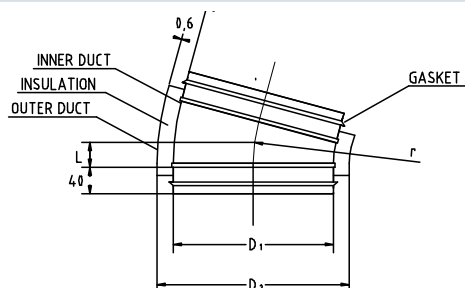
**DIMENSIONS****ORDERING:**

Product code _____ PB-30 aaa
 Type _____
 Dim _____

BEND PB 15°, Preinsulated:

| Item no | Type | D1 | D2 | L | Kg | Marks |
|----------|--------|--------------------|--------------------|----|------|-------|
| 1453-728 | PB-080 | ø 78.8 +/- 0.5/0.0 | ø109.0 +/- 1.0/0.0 | 11 | 0,30 | |
| 1453-729 | PB-100 | ø 98.8 +/- 0.5/0.0 | ø129.0 +/- 1.0/0.0 | 13 | 0,40 | |
| 1453-731 | PB-125 | ø123.8 +/- 0.5/0.0 | ø155.0 +/- 1.0/0.0 | 17 | 0,48 | |
| 1453-732 | PB-160 | ø158.7 +/- 0.6/0.0 | ø190.0 +/- 2.0/0.0 | 21 | 0,67 | |
| 1453-704 | PB-180 | ø178.6 +/- 0.7/0.0 | ø198.0 +/- 2.0/0.0 | 24 | 0,75 | * |
| n/a | PB-180 | ø178.6 +/- 0.7/0.0 | ø209.0 +/- 2,0/0.0 | 24 | 0,9 | ** |
| 1453-733 | PB-200 | ø198.6 +/- 0.7/0.0 | ø229.0 +/- 2.0/0.0 | 26 | 1,1 | |
| 1453-910 | PB-250 | ø248.5 +/- 0.8/0.0 | ø279.0 +/- 2.0/0.0 | 33 | 1,75 | *** |

Bend PB 15°, Preinsulated

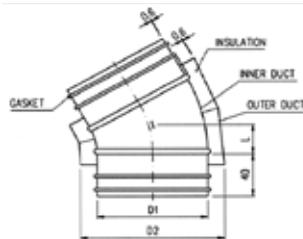
**DIMENSIONS****ORDERING:**

Product code _____ PB-15 aaa
 Type _____
 Dim _____

BEND PB 60°, Preinsulated:

| Item no | Type | D1 | D2 | L | Kg | Marks |
|----------|--------|--------------------|--------------------|-----|------|-------|
| 1453-791 | PB-080 | ∅ 78.8 +/- 0.5/0.0 | ∅109.0 +/- 1.0/0.0 | 46 | 0,36 | |
| 1453-792 | PB-100 | ∅ 98.8 +/- 0.5/0.0 | ∅129.0 +/- 1.0/0.0 | 58 | 0,42 | |
| 1453-793 | PB-125 | ∅123.8 +/- 0.5/0.0 | ∅155.0 +/- 1.0/0.0 | 72 | 0,60 | |
| 1453-794 | PB-160 | ∅158.7 +/- 0.6/0.0 | ∅190.0 +/- 2.0/0.0 | 92 | 0,8 | |
| n/a | PB-180 | ∅178.6 +/- 0.7/0.0 | ∅198.0 +/- 2.0/0.0 | 104 | 1,1 | * |
| n/a | PB-180 | ∅178.6 +/- 0.7/0.0 | ∅209.0 +/- 2,0/0.0 | 104 | 1,2 | ** |
| 1453-795 | PB-200 | ∅198.6 +/- 0.7/0.0 | ∅229.0 +/- 2.0/0.0 | 115 | 1,4 | |
| 1453-796 | PB-250 | ∅248.5 +/- 0.8/0.0 | ∅279.0 +/- 2.0/0.0 | 144 | 2,0 | *** |

Bend PB 60°, Preinsulated

**DIMENSIONS****ORDERING:**

Product code _____ PB-60 aaa
 Type _____
 Dim _____

DESCRIPTION

PB is a double-jacketed circular bend made of galvanized steel sheet and insulated with 16mm mineral wool. The fittings and pipes are ready for assembling as the fittings are supplied with sealed rubber-ring to ensure tightness.

T-Branch, Preinsulated:

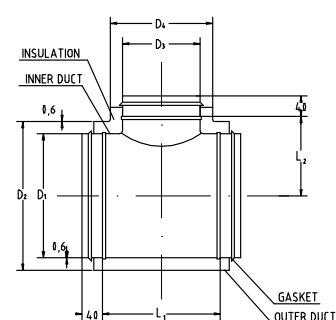
| Item no | Type | D1 | D2 | D3 | D4 | L1 | L2 | Kg | Marks |
|----------|------------|--------------------|--------------------|--------------------|--------------------|-----|-----|------|-------|
| 1453-866 | PT-080/080 | ø 78.8 +/- 0.5/0.0 | ø109.0 +/- 1.0/0.0 | ø 78.8 +/- 0.5/0.0 | ø109.0 +/- 1.0/0.0 | 168 | 65 | 0,60 | |
| 1453-869 | PT-100/080 | ø 98.8 +/- 0.5/0.0 | ø129.0 +/- 1.0/0.0 | ø 78.8 +/- 0.5/0.0 | ø109.0 +/- 1.0/0.0 | 168 | 75 | 0,75 | |
| 1453-871 | PT-100/100 | ø 98.8 +/- 0.5/0.0 | ø129.0 +/- 1.0/0.0 | ø 98.8 +/- 0.5/0.0 | ø129.0 +/- 1.0/0.0 | 168 | 78 | 0,95 | |
| 1453-873 | PT-125/080 | ø123.8 +/- 0.5/0.0 | ø155.0 +/- 1.0/0.0 | ø 78.8 +/- 0.5/0.0 | ø109.0 +/- 1.0/0.0 | 168 | 87 | 0,90 | |
| 1453-874 | PT-125/100 | ø123.8 +/- 0.5/0.0 | ø155.0 +/- 1.0/0.0 | ø 98.8 +/- 0.5/0.0 | ø129.0 +/- 1.0/0.0 | 168 | 85 | 1,10 | |
| 1453-875 | PT-125/125 | ø123.8 +/- 0.5/0.0 | ø155.0 +/- 1.0/0.0 | ø123.8 +/- 0.5/0.0 | ø155.0 +/- 1.0/0.0 | 185 | 82 | 1,25 | |
| 1453-877 | PT-160/080 | ø158.7 +/- 0.6/0.0 | ø190.0 +/- 2.0/0.0 | ø 78.8 +/- 0.5/0.0 | ø109.0 +/- 1.0/0.0 | 168 | 105 | 0,90 | |
| 1453-878 | PT-160/100 | ø158.7 +/- 0.6/0.0 | ø190.0 +/- 2.0/0.0 | ø 98.8 +/- 0.5/0.0 | ø129.0 +/- 1.0/0.0 | 168 | 105 | 1,40 | |
| 1453-879 | PT-160/125 | ø158.7 +/- 0.6/0.0 | ø190.0 +/- 2.0/0.0 | ø123.8 +/- 0.5/0.0 | ø155.0 +/- 1.0/0.0 | 210 | 100 | 1,50 | |
| 1453-881 | PT-160/160 | ø158.7 +/- 0.6/0.0 | ø190.0 +/- 2.0/0.0 | ø158.7 +/- 0.6/0.0 | ø190.0 +/- 2.0/0.0 | 225 | 107 | 1,85 | |
| n/a | PT-180/080 | ø178.6 +/- 0.7/0.0 | ø198.0 +/- 2.0/0.0 | ø 78.8 +/- 0.5/0.0 | ø109.0 +/- 1.0/0.0 | 178 | 105 | 1,85 | * |
| 1453-711 | PT-180/100 | ø178.6 +/- 0.7/0.0 | ø198.0 +/- 2.0/0.0 | ø 98.8 +/- 0.5/0.0 | ø129.0 +/- 1.0/0.0 | | | 2,0 | * |
| 1453-710 | PT-180/125 | ø178.6 +/- 0.7/0.0 | ø198.0 +/- 2.0/0.0 | ø123.8 +/- 0.5/0.0 | ø155.0 +/- 1.0/0.0 | 210 | 110 | 2,2 | * |
| 1453-709 | PT-180/160 | ø178.6 +/- 0.7/0.0 | ø198.0 +/- 2.0/0.0 | ø158.7 +/- 0.6/0.0 | ø190.0 +/- 2.0/0.0 | | | 2,7 | * |
| 1453-708 | PT-180/180 | ø178.6 +/- 0.7/0.0 | ø198.0 +/- 2.0/0.0 | ø178.6 +/- 0.7/0.0 | ø198.0 +/- 2.0/0.0 | 243 | 125 | 2,8 | * |
| n/a | PT-180/080 | ø178.6 +/- 0.7/0.0 | ø209.0 +/- 2,0/0.0 | ø 78.8 +/- 0.5/0.0 | ø109.0 +/- 1.0/0.0 | 178 | 105 | 1,9 | ** |
| n/a | PT-180/100 | ø178.6 +/- 0.7/0.0 | ø209.0 +/- 2,0/0.0 | ø 98.8 +/- 0.5/0.0 | ø129.0 +/- 1.0/0.0 | | | 2,1 | ** |
| n/a | PT-180/125 | ø178.6 +/- 0.7/0.0 | ø209.0 +/- 2,0/0.0 | ø123.8 +/- 0.5/0.0 | ø155.0 +/- 1.0/0.0 | 210 | 110 | 2,5 | ** |
| n/a | PT-180/160 | ø178.6 +/- 0.7/0.0 | ø209.0 +/- 2,0/0.0 | ø158.7 +/- 0.6/0.0 | ø190.0 +/- 2.0/0.0 | | | 2,9 | ** |
| n/a | PT-180/180 | ø178.6 +/- 0.7/0.0 | ø209.0 +/- 2,0/0.0 | ø178.6 +/- 0.7/0.0 | ø209.0 +/- 2,0/0.0 | 243 | 125 | 3,2 | ** |
| 1453-883 | PT-200/100 | ø198.6 +/- 0.7/0.0 | ø229.0 +/- 2.0/0.0 | ø 98.8 +/- 0.5/0.0 | ø129.0 +/- 1.0/0.0 | 175 | 115 | 2,00 | |
| 1453-885 | PT-200/125 | ø198.6 +/- 0.7/0.0 | ø229.0 +/- 2.0/0.0 | ø123.8 +/- 0.5/0.0 | ø155.0 +/- 1.0/0.0 | 210 | 120 | 2,20 | |
| 1453-887 | PT-200/160 | ø198.6 +/- 0.7/0.0 | ø229.0 +/- 2.0/0.0 | ø158.7 +/- 0.6/0.0 | ø190.0 +/- 2.0/0.0 | 224 | 125 | 2,50 | |
| 1453-712 | PT-200/180 | ø198.6 +/- 0.7/0.0 | ø229.0 +/- 2.0/0.0 | ø178.6 +/- 0.7/0.0 | ø190.0 +/- 2.0/0.0 | 285 | 125 | 3,0 | * |
| n/a | PT-200/180 | ø198.6 +/- 0.7/0.0 | ø229.0 +/- 2.0/0.0 | ø178.6 +/- 0.7/0.0 | ø209.0 +/- 2,0/0.0 | 285 | 125 | 3,1 | ** |
| 1453-889 | PT-200/200 | ø198.6 +/- 0.7/0.0 | ø229.0 +/- 2.0/0.0 | ø198.6 +/- 0.7/0.0 | ø229.0 +/- 2.0/0.0 | 267 | 123 | 2,75 | |
| 1453-891 | PT-250/100 | ø248.5 +/- 0.8/0.0 | ø279.0 +/- 2.0/0.0 | ø 98.8 +/- 0.5/0.0 | ø129.0 +/- 1.0/0.0 | 175 | 175 | 2,5 | *** |
| 1453-892 | PT-250/125 | ø248.5 +/- 0.8/0.0 | ø279.0 +/- 2.0/0.0 | ø123.8 +/- 0.5/0.0 | ø155.0 +/- 1.0/0.0 | 198 | 198 | 2,7 | *** |
| 1453-893 | PT-250/160 | ø248.5 +/- 0.8/0.0 | ø279.0 +/- 2.0/0.0 | ø158.7 +/- 0.6/0.0 | ø190.0 +/- 2.0/0.0 | 224 | 224 | 3,0 | *** |
| 1453-713 | PT-250/180 | ø248.5 +/- 0.8/0.0 | ø279.0 +/- 2.0/0.0 | ø178.6 +/- 0.7/0.0 | ø198.0 +/- 2.0/0.0 | 306 | 306 | 3,5 | * |
| n/a | PT-250/180 | ø248.5 +/- 0.8/0.0 | ø279.0 +/- 2.0/0.0 | ø178.6 +/- 0.7/0.0 | ø209.0 +/- 2,0/0.0 | 306 | 306 | 3,8 | ** |
| 1453-895 | PT-250/200 | ø248.5 +/- 0.8/0.0 | ø279.0 +/- 2.0/0.0 | ø198.6 +/- 0.7/0.0 | ø229.0 +/- 2.0/0.0 | 306 | 306 | 4,1 | *** |
| 1453-897 | PT-250/250 | ø248.5 +/- 0.8/0.0 | ø279.0 +/- 2.0/0.0 | ø248.5 +/- 0.8/0.0 | ø279.0 +/- 2.0/0.0 | 317 | 306 | 4,6 | *** |

DESCRIPTION

PT is a double-jacketed circular T-branch piece made of galvanized steel sheet and insulated with 16mm mineral wool. The fittings and pipes are ready for assembling as the fittings are supplied with a sealed rubber-ring to ensure tightness.

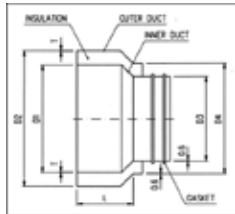
ORDERING:

Product code _____ PT _____ aaa _____ bbb _____
 Type _____
 Dim1 _____
 Dim2 _____

T-Branch, Preinsulated**DIMENSIONS**

Reducer PF-socket/nipple, Preinsulated:

| Item no | Type | D1 | D2 | D3 | D4 | L | Kg | Marks |
|----------|------------|--------------------|------------------|--------------------|--------------------|-----|------|-------|
| 1453-751 | PF-100/080 | ø100.5 +/- 0.0/0.5 | ø132.5 +/- 0/0.5 | ø 78.8 +/- 0.5/0.0 | ø109.0 +/- 1.0/0.0 | 64 | 0.40 | |
| 1453-752 | PF-125/080 | ø125.5 +/- 0.0/0.5 | ø158.6 +/- 0/0.6 | ø 78.8 +/- 0.5/0.0 | ø109.0 +/- 1.0/0.0 | 77 | 0.50 | |
| 1453-755 | PF-125/100 | ø125.5 +/- 0.0/0.5 | ø158.6 +/- 0/0.6 | ø 98.8 +/- 0.5/0.0 | ø129.0 +/- 1.0/0.0 | 64 | 0.50 | |
| 1453-757 | PF-160/100 | ø160.6 +/- 0.0/0.6 | ø194.7 +/- 0/0.7 | ø 98.8 +/- 0.5/0.0 | ø129.0 +/- 1.0/0.0 | 84 | 0,6 | |
| 1453-759 | PF-160/125 | ø160.6 +/- 0.0/0.6 | ø194.7 +/- 0/0.7 | ø123.8 +/- 0.5/0.0 | ø155.0 +/- 1.0/0.0 | 69 | 0,6 | |
| 1453-716 | PF-180/100 | ø180.7 +/- 0.0/0.7 | ø200.7 +/- 0/0.8 | ø 98.8 +/- 0.5/0.0 | ø129.0 +/- 1.0/0.0 | 94 | 0,67 | * |
| 1453-715 | PF-180/125 | ø180.7 +/- 0.0/0.7 | ø200.7 +/- 0/0.8 | ø123.8 +/- 0.5/0.0 | ø155.0 +/- 1.0/0.0 | 82 | 0,67 | * |
| 1453-714 | PF-180/160 | ø180.7 +/- 0.0/0.7 | ø200.7 +/- 0/0.8 | ø158.7 +/- 0.6/0.0 | ø190.0 +/- 2.0/0.0 | 64 | 0,67 | * |
| n/a | PF-180/100 | ø180.7 +/- 0.0/0.7 | ø212.7 +/- 0/0.8 | ø 98.8 +/- 0.5/0.0 | ø129.0 +/- 1.0/0.0 | 94 | 0,67 | ** |
| n/a | PF-180/125 | ø180.7 +/- 0.0/0.7 | ø212.7 +/- 0/0.8 | ø123.8 +/- 0.5/0.0 | ø155.0 +/- 1.0/0.0 | 82 | 0,67 | ** |
| n/a | PF-180/160 | ø180.7 +/- 0.0/0.7 | ø212.7 +/- 0/0.8 | ø158.7 +/- 0.6/0.0 | ø190.0 +/- 2.0/0.0 | 64 | 0,67 | ** |
| 1453-761 | PF-200/100 | ø200.7 +/- 0.0/0.7 | ø232.8 +/- 0/0.8 | ø 98.8 +/- 0.5/0.0 | ø129.0 +/- 1.0/0.0 | 104 | 0,9 | |
| 1453-763 | PF-200/125 | ø200.7 +/- 0.0/0.7 | ø232.8 +/- 0/0.8 | ø123.8 +/- 0.5/0.0 | ø155.0 +/- 1.0/0.0 | 92 | 0,9 | |
| 1453-765 | PF-200/160 | ø200.7 +/- 0.0/0.7 | ø232.8 +/- 0/0.8 | ø158.7 +/- 0.6/0.0 | ø190.0 +/- 2.0/0.0 | 74 | 0,9 | |
| 1453-714 | PF-200/180 | ø200.7 +/- 0.0/0.7 | ø232.8 +/- 0/0.8 | ø178.6 +/- 0.7/0.0 | ø198.0 +/- 2.0/0.0 | 64 | 1,0 | * |
| n/a | PF-200/180 | ø200.7 +/- 0.0/0.7 | ø232.8 +/- 0/0.8 | ø178.6 +/- 0.7/0.0 | ø209.0 +/- 2,0/0.0 | 64 | 1,0 | ** |
| 1453-762 | PF-250/125 | ø250.8 +/- 0.0/0.8 | ø282.8 +/- 0/0.8 | ø123.8 +/- 0.5/0.0 | ø155.0 +/- 1.0/0.0 | 127 | 1,1 | |
| 1453-764 | PF-250/160 | ø250.8 +/- 0.0/0.8 | ø282.8 +/- 0/0.8 | ø158.7 +/- 0.6/0.0 | ø190.0 +/- 2.0/0.0 | 109 | 1,1 | |
| 1453-718 | PF-250/180 | ø250.8 +/- 0.0/0.8 | ø282.8 +/- 0/0.8 | ø178.6 +/- 0.7/0.0 | ø198.0 +/- 2.0/0.0 | 99 | 1,1 | * |
| n/a | PF-250/180 | ø250.8 +/- 0.0/0.8 | ø282.8 +/- 0/0.8 | ø178.6 +/- 0.7/0.0 | ø209.0 +/- 2,0/0.0 | 99 | 1,2 | ** |
| 1453-766 | PF-250/200 | ø250.8 +/- 0.0/0.8 | ø282.8 +/- 0/0.8 | ø198.6 +/- 0.7/0.0 | ø229.0 +/- 2.0/0.0 | 89 | 1,2 | |

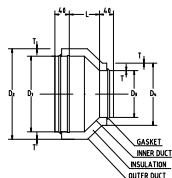
DIMENSIONS**Reducer PF, Preinsulated****DESCRIPTION**

PF is a jacketed circulare reducer with socket/nipple connection, made of galvanized steel sheet and insulated with 16mm mineral wool.

The fittings and pipes are ready for assembling as the reducer are supplied with a sealed rubber-ring on the nipple side to ensure tightness.

Reducer PE-nipple/nipple, Preinsulated:

| Item no | Type | D1 | D2 | D3 | D4 | L | Kg | Marks |
|----------|------------|--------------------|--------------------|--------------------|--------------------|----|------|-------|
| 1453-780 | PE-100/080 | ø 98.8 +/- 0.5/0.0 | ø129.0 +/- 1.0/0.0 | ø 78.8 +/- 0.5/0.0 | ø109.0 +/- 1.0/0.0 | 28 | 0,40 | |
| 1453-781 | PE-125/080 | ø123.8 +/- 0.5/0.0 | ø155.0 +/- 1.0/0.0 | ø 78.8 +/- 0.5/0.0 | ø109.0 +/- 1.0/0.0 | 41 | 0,45 | |
| 1453-783 | PE-125/100 | ø123.8 +/- 0.5/0.0 | ø155.0 +/- 1.0/0.0 | ø 98.8 +/- 0.5/0.0 | ø129.0 +/- 1.0/0.0 | 30 | 0,48 | |
| 1453-784 | PE-160/100 | ø158.7 +/- 0.6/0.0 | ø190.0 +/- 2.0/0.0 | ø 98.8 +/- 0.5/0.0 | ø129.0 +/- 1.0/0.0 | 48 | 0,50 | |
| 1453-785 | PE-160/125 | ø158.7 +/- 0.6/0.0 | ø190.0 +/- 2.0/0.0 | ø123.8 +/- 0.5/0.0 | ø155.0 +/- 1.0/0.0 | 33 | 0,55 | |
| n/a | PE-180/100 | ø178.6 +/- 0.7/0.0 | ø198.0 +/- 2.0/0.0 | ø 98.8 +/- 0.5/0.0 | ø129.0 +/- 1.0/0.0 | 58 | 0,66 | * |
| n/a | PE-180/125 | ø178.6 +/- 0.7/0.0 | ø198.0 +/- 2.0/0.0 | ø123.8 +/- 0.5/0.0 | ø155.0 +/- 1.0/0.0 | 46 | 0,80 | * |
| n/a | PE-180/160 | ø178.6 +/- 0.7/0.0 | ø198.0 +/- 2.0/0.0 | ø158.7 +/- 0.6/0.0 | ø190.0 +/- 2.0/0.0 | 28 | 0,80 | * |
| n/a | PE-180/100 | ø178.6 +/- 0.7/0.0 | ø209.0 +/- 2,0/0.0 | ø 98.8 +/- 0.5/0.0 | ø129.0 +/- 1.0/0.0 | 58 | 0,66 | ** |
| n/a | PE-180/125 | ø178.6 +/- 0.7/0.0 | ø209.0 +/- 2,0/0.0 | ø123.8 +/- 0.5/0.0 | ø155.0 +/- 1.0/0.0 | 46 | 0,80 | ** |
| n/a | PF-180/160 | ø178.6 +/- 0.7/0.0 | ø209.0 +/- 2,0/0.0 | ø158.7 +/- 0.6/0.0 | ø190.0 +/- 2.0/0.0 | 28 | 0,80 | ** |
| 1453-786 | PE-200/100 | ø198.6 +/- 0.7/0.0 | ø229.0 +/- 2.0/0.0 | ø 98.8 +/- 0.5/0.0 | ø129.0 +/- 1.0/0.0 | 68 | 0,80 | |
| 1453-788 | PE-200/125 | ø198.6 +/- 0.7/0.0 | ø229.0 +/- 2.0/0.0 | ø123.8 +/- 0.5/0.0 | ø155.0 +/- 1.0/0.0 | 56 | 0,85 | |
| 1453-787 | PE-200/160 | ø198.6 +/- 0.7/0.0 | ø229.0 +/- 2.0/0.0 | ø158.7 +/- 0.6/0.0 | ø190.0 +/- 2.0/0.0 | 37 | 0,85 | |
| n/a | PE-200/180 | ø198.6 +/- 0.7/0.0 | ø229.0 +/- 2.0/0.0 | ø178.6 +/- 0.7/0.0 | ø198.0 +/- 2.0/0.0 | 28 | 0,80 | * |
| n/a | PE-200/180 | ø198.6 +/- 0.7/0.0 | ø229.0 +/- 2.0/0.0 | ø178.6 +/- 0.7/0.0 | ø209.0 +/- 2,0/0.0 | 28 | 0,85 | ** |
| n/a | PE-250/125 | ø248.5 +/- 0.8/0.0 | ø279.0 +/- 2.0/0.0 | ø123.8 +/- 0.5/0.0 | ø155.0 +/- 1.0/0.0 | 81 | 1,15 | |
| 1453-790 | PE-250/160 | ø248.5 +/- 0.8/0.0 | ø279.0 +/- 2.0/0.0 | ø158.7 +/- 0.6/0.0 | ø190.0 +/- 2.0/0.0 | 63 | 1,15 | |
| n/a | PE-250/180 | ø248.5 +/- 0.8/0.0 | ø279.0 +/- 2.0/0.0 | ø178.6 +/- 0.7/0.0 | ø198.0 +/- 2.0/0.0 | 53 | 1,15 | * |
| n/a | PE-250/180 | ø248.5 +/- 0.8/0.0 | ø279.0 +/- 2.0/0.0 | ø178.6 +/- 0.7/0.0 | ø209.0 +/- 2,0/0.0 | 53 | 1,20 | ** |
| 1453-789 | PE-250/200 | ø248.5 +/- 0.8/0.0 | ø279.0 +/- 2.0/0.0 | ø198.6 +/- 0.7/0.0 | ø229.0 +/- 2.0/0.0 | 43 | 1,22 | |

DIMENSIONS**ORDERING:**

Product code _____ PF/PE aaa bbb
 Type _____
 Dim1 _____
 Dim2 _____

DESCRIPTION

PE is a jacketed circular reducer with nipple/nipple connection made of galvanized steel sheet and insulated with 16mm mineral wool.

The fittings and pipes are ready for assembling as the fittings are supplied with a sealed rubber-ring to ensure tightness.

Reducer PE, Preinsulated

Socket PM, Preinsulated:

| Item no | Type | D1 | D2 | Kg | Marks |
|----------|--------|--------------------|------------------|------|-------|
| 1453-814 | PM-080 | ø080.5 +/- 0.0/0.5 | ø112.5 +/- 0/0.5 | 0.30 | |
| 1453-815 | PM-100 | ø100.5 +/- 0.0/0.5 | ø132.5 +/- 0/0.5 | 0.35 | |
| 1453-816 | PM-125 | ø125.5 +/- 0.0/0.5 | ø158.6 +/- 0/0.6 | 0.45 | |
| 1453-817 | PM-160 | ø160.6 +/- 0.0/0.6 | ø194.7 +/- 0/0.7 | 0.50 | |
| 1453-703 | PM-180 | ø180.7 +/- 0.0/0.7 | ø200.7 +/- 0/0.8 | 0,6 | * |
| n/a | PM-180 | ø180.7 +/- 0.0/0.7 | ø212.7 +/- 0/0.8 | 0,6 | ** |
| 1453-818 | PM-200 | ø200.7 +/- 0.0/0.7 | ø232.8 +/- 0/0.8 | 0.67 | |
| 1453-819 | PM-250 | ø250.8 +/- 0.0/0.8 | ø282.8 +/- 0/0.8 | 1,14 | *** |

Socket PM, Preinsulated:



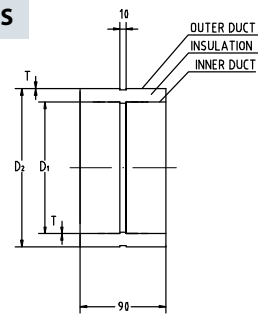
DESCRIPTION

PM is a double-jacketed circular socket made of galvanized steel sheet and insulated with 16mm mineral wool. The fittings and pipes are ready for assembling as the fittings are supplied with a sealed rubber-ring on the nipple side to ensure tightness.

ORDERING:

Product code _____ PM _____ aaa _____
 Type _____
 Dim _____

DIMENSIONS



Nipple PN/N, for preinsulated duct work:

| Item no | Type | D1 | D2 | Kg | Marks |
|-----------|----------|--------------------|--------------------|------|-------|
| 1453-833" | PN/N-080 | ø 78.8 +/- 0.5/0.0 | ø109.0 +/- 1.0/0.0 | 0.18 | |
| 1453-822" | PN/N-100 | ø 98.8 +/- 0.5/0.0 | ø129.0 +/- 1.0/0.0 | 0.20 | |
| 1453-824" | PN/N-125 | ø123.8 +/- 0.5/0.0 | ø155.0 +/- 1.0/0.0 | 0.25 | |
| 1453-826" | PN/N-160 | ø158.7 +/- 0.6/0.0 | ø190.0 +/- 2.0/0.0 | 0.30 | |
| n/a | PN/N-180 | ø178.6 +/- 0.7/0.0 | ø198.0 +/- 2.0/0.0 | 0,43 | * |
| n/a | PN/N-180 | ø178.6 +/- 0.7/0.0 | ø209.0 +/- 2,0/0.0 | 0,43 | ** |
| 1453-828" | PN/N-200 | ø198.6 +/- 0.7/0.0 | ø229.0 +/- 2.0/0.0 | 0.45 | |
| 1453-830" | PN/N-250 | ø248.5 +/- 0.8/0.0 | ø279.0 +/- 2.0/0.0 | 0.79 | *** |

Nipple PN/N



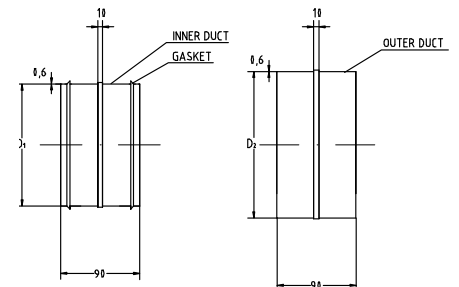
DESCRIPTION

PN-N is a double-jacketed circular nipple made of galvanized steel sheet. The fittings and pipes are ready for assembling as the inner part of the nipples are supplied with sealed rubber-ring to ensure tightness.

ORDERING:

Product code _____ PN/N _____ aaa _____
 Type _____
 Dim _____

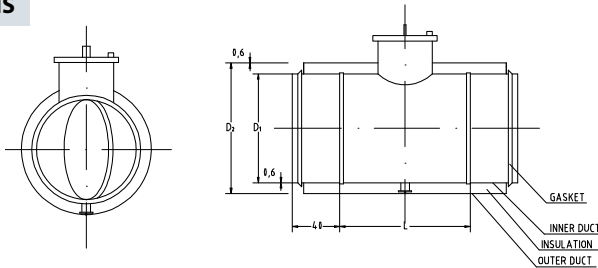
DIMENSIONS



Damper PP-1, Preinsulated:

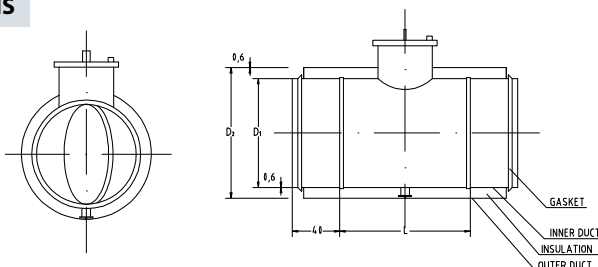
| Item no | Type | D1 | D2 | L | Kg | Marks |
|----------|----------|--------------------|--------------------|----|------|-------|
| 1453-846 | PP-1-080 | ø 78.8 +/- 0.5/0.0 | ø109.0 +/- 1.0/0.0 | 90 | 0.60 | |
| 1453-847 | PP-1-100 | ø 98.8 +/- 0.5/0.0 | ø129.0 +/- 1.0/0.0 | 90 | 0.70 | |
| 1453-849 | PP-1-125 | ø123.8 +/- 0.5/0.0 | ø155.0 +/- 1.0/0.0 | 90 | 0.85 | |
| 1453-851 | PP-1-160 | ø158.7 +/- 0.6/0.0 | ø190.0 +/- 2.0/0.0 | 90 | 1.10 | |
| 1453-719 | PP-1-180 | ø178.6 +/- 0.7/0.0 | ø198.0 +/- 2.0/0.0 | 90 | 1,35 | * |
| n/a | PP-1-180 | ø178.6 +/- 0.7/0.0 | ø209.0 +/- 2,0/0.0 | 90 | 1,40 | ** |
| 1453-852 | PP-1-200 | ø198.6 +/- 0.7/0.0 | ø229.0 +/- 2.0/0.0 | 90 | 1,55 | |
| 1453-853 | PP-1-250 | ø248.5 +/- 0.8/0.0 | ø279.0 +/- 2.0/0.0 | 90 | 1,60 | *** |

Damper PP-1 Preinsulated:

**DIMENSIONS****Damper PP-4, Preinsulated:**

| Item no | Type | D1 | D2 | L | Kg | Marks |
|----------|----------|--------------------|--------------------|----|------|-------|
| 1453-855 | PP-4-080 | ø 78.8 +/- 0.5/0.0 | ø109.0 +/- 1.0/0.0 | 90 | 0.60 | |
| 1453-856 | PP-4-100 | ø 98.8 +/- 0.5/0.0 | ø129.0 +/- 1.0/0.0 | 90 | 0.70 | |
| 1453-857 | PP-4-125 | ø123.8 +/- 0.5/0.0 | ø155.0 +/- 1.0/0.0 | 90 | 0.85 | |
| 1453-851 | PP-4-160 | ø158.7 +/- 0.6/0.0 | ø190.0 +/- 2.0/0.0 | 90 | 1.10 | |
| n/a | PP-4-180 | ø178.6 +/- 0.7/0.0 | ø198.0 +/- 2.0/0.0 | 90 | 1,35 | * |
| n/a | PP-4-180 | ø178.6 +/- 0.7/0.0 | ø209.0 +/- 2,0/0.0 | 90 | 1,40 | ** |
| 1453-859 | PP-4-200 | ø198.6 +/- 0.7/0.0 | ø229.0 +/- 2.0/0.0 | 90 | 1,55 | |
| 1453-860 | PP-4-250 | ø248.5 +/- 0.8/0.0 | ø279.0 +/- 2.0/0.0 | 90 | 1,60 | *** |

Damper PP-4 Preinsulated:

**DIMENSIONS****DESCRIPTION**

PP-1 and PP-4 are double-jacketed circular balancing and shut-off dampers. PP-4 are in tightnessclass 4 according to EN1751:1998. The dampers are made of galvanized steel sheet and insulated with 16mm mineral wool and are ready for assembling with pipes as the fittings are supplied with a sealed rubber-ring to ensure tightness.

ORDERING:

Product code _____ PP-1/PP-4 aaa
 Type _____
 Dim _____

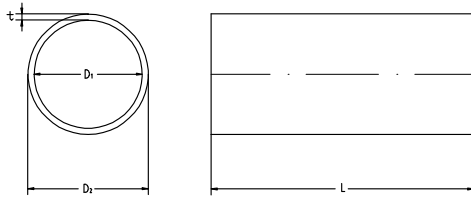
Collar Pipe PGF, uninsulated deck and bulkhead penetration.

| D1 | D2 | Kg | | | T |
|---------|-------|--------|--------|--------|-----|
| | | L1=125 | L2=200 | L3=900 | |
| PGF-080 | 88,9 | 1,2 | 1,9 | 8,4 | 4,5 |
| PGF-100 | 114,3 | 2,1 | 3,4 | 15,1 | 6,3 |
| PGF-125 | 139,7 | 2,6 | 4,2 | 17,7 | 6,3 |
| PGF-160 | 168,3 | 2,3 | 3,7 | 16,4 | 4,5 |
| PGF-200 | 219,1 | 5,7 | 9,12 | 41 | 8,8 |

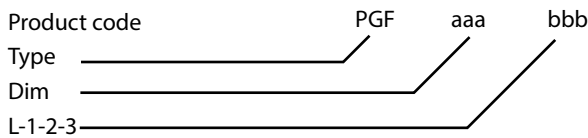
Collar Pipe PGF



DIMENSIONS



ORDERING:



DESCRIPTION

PGF is an uninsulated bulkhead and deck penetration piece to be equipped with a long telescopic nipple BDEN-4 on each side for connection to the ventiduct system. (Nipple is not incl.)

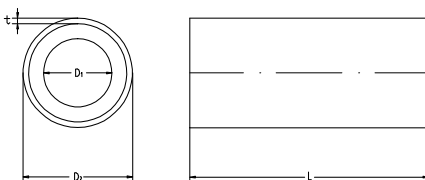
Collar Pipe PGIF insulated deck and bulkhead penetration.

| D1 | D2 | Kg | | | T |
|----------|-------|--------|--------|--------|-----|
| | | L1=125 | L2=200 | L3=900 | |
| PGIF-080 | 114,3 | 1,4 | 2,2 | 10 | 3,6 |
| PGIF-100 | 139,7 | 2,9 | 4,7 | 21,2 | 6,3 |
| PGIF-125 | 168,3 | 3,3 | 5,2 | 23,1 | 6,3 |
| PGIF-160 | 193,7 | 3,7 | 5,9 | 26,4 | 5,6 |
| PGIF-200 | 244,5 | 5,1 | 8,3 | 37,1 | 6,3 |

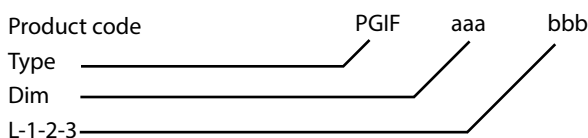
Collar Pipe PGIF



DIMENSIONS



ORDERING:

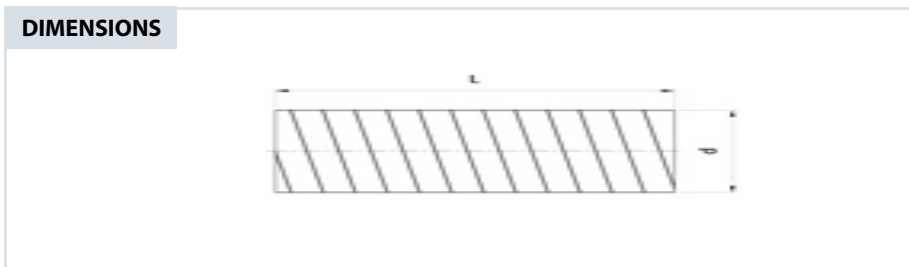
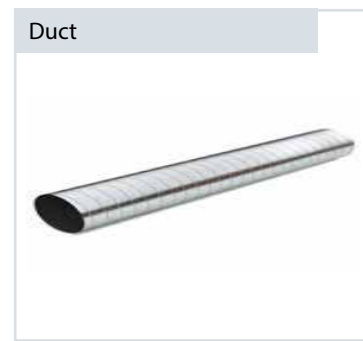


DESCRIPTION

PGIF is an insulated bulkhead and deck penetration piece to be equipped with a long telescopic nipple BDEN-4 on each side for connection to the ventiduct system. (Nipple is not incl.)

Duct BDEK Uninsulated:

| Item no | Type | D1 | T | Kg/m | L |
|----------|-------|--------------------|------|------|------|
| 1545-100 | K-008 | ø80.5 +/- 0.0/0.5 | 0,42 | 0,9 | 3000 |
| 1454-008 | K-010 | ø100.5 +/- 0.0/0.5 | 0,42 | 1,1 | 3000 |
| 1454-009 | K-012 | ø125.5 +/- 0.0/0.5 | 0,42 | 1,4 | 3000 |
| 1454-010 | K-016 | ø160.6 +/- 0.0/0.6 | 0,42 | 2,1 | 3000 |
| 1454-007 | K-018 | ø180.7 +/- 0.0/0.7 | 0,5 | 2,3 | 3000 |
| 1454-011 | K-020 | ø200.7 +/- 0.0/0.7 | 0,5 | 2,7 | 3000 |
| 1454-012 | K-025 | ø250.8 +/- 0.0/0.8 | 0,5 | 3,3 | 3000 |



Ordering:
 Product code _____ K
 Type _____ | _____ aaa
 Dim _____ | _____

DESCRIPTION

The VELODUCT® system is a complete system of round ducting for which type approval for tightness class D according to EN 12237 has been granted.

- All duct fittings are equipped with a sealing ring made of EPDM rubber.
- Permits rapid, easy and clean installation
- Can be installed in any climate
- Made of fireproof sheet steel TYPE APPROVALS AND CERTIFICATES

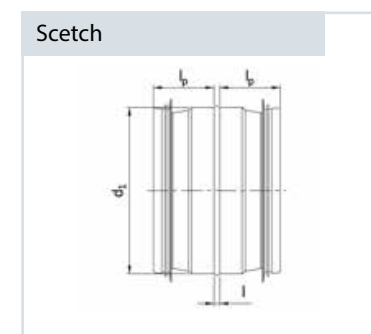
Hanger H, for un-insulated duct work:

| Item no. | Type | D | Dim | Kg |
|----------|-------|------|---------|------|
| 1544-004 | H-080 | ø 81 | 1,25/30 | 0.08 |
| 1544-006 | H-100 | ø102 | 1,25/30 | 0.10 |
| 1544-008 | H-125 | ø127 | 1,25/30 | 0.12 |
| 1544-010 | H-160 | ø162 | 1,50/30 | 0.15 |
| n/a | H-180 | ø182 | 1,50/30 | 0,23 |
| 1544-012 | H-200 | ø202 | 1,50/30 | 0.27 |
| 1544-014 | H-250 | ø252 | 1,50/30 | 0.34 |



*** Connection for all fittings are based on the measure lp and d1 from attached sketch, for values see table below**

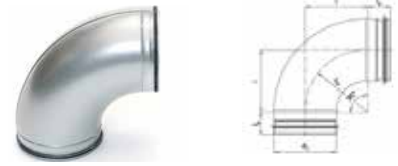
| Size | D1 | Lp |
|-------|--------------------|----|
| ø 080 | ø 78.8 +/- 0.5/0.0 | 35 |
| ø 100 | ø 98.8 +/- 0.5/0.0 | 35 |
| ø 125 | ø123.8 +/- 0.5/0.0 | 35 |
| ø 160 | ø158.7 +/- 0.6/0.0 | 35 |
| ø 180 | ø178.6 +/- 0.7/0.0 | 35 |
| ø 200 | ø198.6 +/- 0.7/0.0 | 35 |
| ø 250 | ø248.5 +/- 0.8/0.0 | 45 |



BEND 90°, Uninsulated:

| Item no | Type | D1 | L | rm | Kg |
|----------|-------|--------------------|-----|-----|------|
| 1546-111 | B-008 | ø 78.8 +/- 0.5/0.0 | 110 | 110 | 0,26 |
| 1546-112 | B-010 | ø 98.8 +/- 0.5/0.0 | 100 | 100 | 0,32 |
| 1546-113 | B-012 | ø123.8 +/- 0.5/0.0 | 125 | 125 | 0,45 |
| 1546-114 | B-016 | ø158.7 +/- 0.6/0.0 | 160 | 160 | 0,60 |
| 1454-115 | B-018 | ø178.6 +/- 0.7/0.0 | 180 | 180 | 0,83 |
| 1546-116 | B-020 | ø198.6 +/- 0.7/0.0 | 200 | 200 | 1,00 |
| 1546-117 | B-025 | ø248.5 +/- 0.8/0.0 | 250 | 250 | 1,80 |

Bend 90°


BEND 60°, Uninsulated:

| Item no | Type | D1 | L | rm | Kg |
|----------|-------|--------------------|-----|-----|------|
| 1546-660 | B-008 | ø 78.8 +/- 0.5/0.0 | 46 | 80 | 030 |
| 1546-661 | B-010 | ø 98.8 +/- 0.5/0.0 | 58 | 100 | 030 |
| 1546-662 | B-012 | ø123.8 +/- 0.5/0.0 | 72 | 125 | 0,40 |
| 1546-663 | B-016 | ø158.7 +/- 0.6/0.0 | 92 | 160 | 0,60 |
| | B-018 | ø178.6 +/- 0.7/0.0 | 104 | 180 | 1,20 |
| 1546-664 | B-020 | ø198.6 +/- 0.7/0.0 | 115 | 200 | 1,50 |
| 1546-665 | B-025 | ø248.5 +/- 0.8/0.0 | 144 | 250 | 1,70 |

Bend 60°


BEND 45°, Uninsulated:

| Item no | Type | D1 | L | rm | Kg |
|----------|-------|--------------------|-----|-----|------|
| 1546-081 | B-008 | ø 78.8 +/- 0.5/0.0 | 40 | 100 | 0,19 |
| 1546-082 | B-010 | ø 98.8 +/- 0.5/0.0 | 41 | 100 | 0,21 |
| 1546-083 | B-012 | ø123.8 +/- 0.5/0.0 | 52 | 125 | 0,29 |
| 1546-084 | B-016 | ø158.7 +/- 0.6/0.0 | 66 | 160 | 0,48 |
| 1454-085 | B-018 | ø178.6 +/- 0.7/0.0 | 76 | 180 | 0,55 |
| 1546-085 | B-020 | ø198.6 +/- 0.7/0.0 | 83 | 200 | 0,60 |
| 1546-087 | B-025 | ø248.5 +/- 0.8/0.0 | 104 | 250 | 0,80 |

Bend 45°



BEND 30°, Uninsulated:

| Item no | Type | D1 | L | rm | Kg |
|----------|-------|--------------------|----|-----|------|
| 1546-066 | B-008 | ø 78.8 +/- 0.5/0.0 | 22 | 80 | 0,26 |
| 1546-067 | B-010 | ø 98.8 +/- 0.5/0.0 | 27 | 100 | 0,32 |
| 1546-068 | B-012 | ø123.8 +/- 0.5/0.0 | 34 | 125 | 0,45 |
| 1546-069 | B-016 | ø158.7 +/- 0.6/0.0 | 43 | 160 | 0,60 |
| 1454-070 | B-018 | ø178.6 +/- 0.7/0.0 | 48 | 180 | 0,83 |
| 1546-070 | B-020 | ø198.6 +/- 0.7/0.0 | 54 | 200 | 1,00 |
| 1546-071 | B-025 | ø248.5 +/- 0.8/0.0 | 67 | 250 | 1,80 |

Bend 30°

**BEND 15°, Uninsulated:**

| Item no | Type | D1 | L | rm | Kg |
|----------|-------|--------------------|----|-----|------|
| 1546-049 | B-008 | ø 78.8 +/- 0.5/0.0 | 11 | 80 | 0,19 |
| 1546-050 | B-010 | ø 98.8 +/- 0.5/0.0 | 13 | 100 | 0,21 |
| 1546-051 | B-012 | ø123.8 +/- 0.5/0.0 | 17 | 125 | 0,29 |
| 1546-052 | B-016 | ø158.7 +/- 0.6/0.0 | 21 | 160 | 0,48 |
| 1454-053 | B-018 | ø178.6 +/- 0.7/0.0 | 24 | 180 | 0,55 |
| 1546-053 | B-020 | ø198.6 +/- 0.7/0.0 | 26 | 200 | 0,60 |
| 1546-054 | B-025 | ø248.5 +/- 0.8/0.0 | 33 | 250 | 0,80 |

Bend 15°

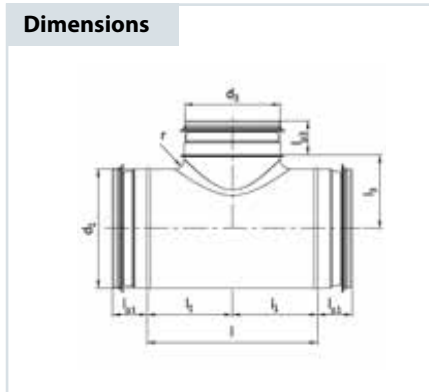
**DESCRIPTION**

- VTT SERT R022-04; ductwork for ventilation systems Air tightness-class C and D in accordance with NEN-EN 1507 and 12237
- M1 Cleanliness classification of air handling components.
- DW-144 norm
- Luka norm
- SITAC norm

T-Branch, Uninsulated

| Item no | Type | D1 | D3 | L | L1 | L3 | Kg |
|----------|------------------|--------------------|--------------------|-----|-----|-----|------|
| 1546-221 | T-Branch-080/080 | ø 78.8 +/- 0.5/0.0 | ø 78.8 +/- 0.5/0.0 | 168 | 84 | 65 | 0,40 |
| 1546-222 | T-Branch-100/080 | ø 98.8 +/- 0.5/0.0 | ø 78.8 +/- 0.5/0.0 | 168 | 84 | 75 | 0,40 |
| 1546-223 | T-Branch-100/100 | ø 98.8 +/- 0.5/0.0 | ø 98.8 +/- 0.5/0.0 | 168 | 84 | 78 | 0,49 |
| 1546-227 | T-Branch-125/080 | ø123.8 +/- 0.5/0.0 | ø 78.8 +/- 0.5/0.0 | 168 | 84 | 87 | 0,50 |
| 1546-228 | T-Branch-125/100 | ø123.8 +/- 0.5/0.0 | ø 98.8 +/- 0.5/0.0 | 168 | 84 | 85 | 0,60 |
| 1546-229 | T-Branch-125/125 | ø123.8 +/- 0.5/0.0 | ø123.8 +/- 0.5/0.0 | 185 | 92 | 82 | 0,60 |
| 1546-233 | T-Branch-160/080 | ø158.7 +/- 0.6/0.0 | ø 78.8 +/- 0.5/0.0 | 168 | 84 | 103 | 0,70 |
| 1546-234 | T-Branch-160/100 | ø158.7 +/- 0.6/0.0 | ø 98.8 +/- 0.5/0.0 | 168 | 84 | 105 | 0,70 |
| 1546-235 | T-Branch-160/125 | ø158.7 +/- 0.6/0.0 | ø123.8 +/- 0.5/0.0 | 210 | 105 | 100 | 0,80 |
| 1546-236 | T-Branch-160/160 | ø158.7 +/- 0.6/0.0 | ø158.7 +/- 0.6/0.0 | 225 | 112 | 107 | 0,90 |
| n/a | T-Branch-180/080 | ø178.6 +/- 0.7/0.0 | ø 78.8 +/- 0.5/0.0 | 178 | 89 | 105 | 0,70 |
| n/a | T-Branch-180/100 | ø178.6 +/- 0.7/0.0 | ø 98.8 +/- 0.5/0.0 | 178 | | | 0,70 |
| n/a | T-Branch-180/125 | ø178.6 +/- 0.7/0.0 | ø123.8 +/- 0.5/0.0 | 210 | 105 | 110 | 0,90 |
| n/a | T-Branch-180/160 | ø178.6 +/- 0.7/0.0 | ø158.7 +/- 0.6/0.0 | 225 | | | 0,90 |
| n/a | T-Branch-180/180 | ø178.6 +/- 0.7/0.0 | ø178.6 +/- 0.7/0.0 | 243 | 121 | 125 | 0,95 |
| 1546-240 | T-Branch-200/100 | ø198.6 +/- 0.7/0.0 | ø 98.8 +/- 0.5/0.0 | 175 | 87 | 115 | 1,10 |
| 1546-241 | T-Branch-200/125 | ø198.6 +/- 0.7/0.0 | ø123.8 +/- 0.5/0.0 | 210 | 105 | 120 | 1,10 |
| 1546-242 | T-Branch-200/160 | ø198.6 +/- 0.7/0.0 | ø158.7 +/- 0.6/0.0 | 224 | 112 | 125 | 1,05 |
| n/a | T-Branch-200/180 | ø198.6 +/- 0.7/0.0 | ø178.6 +/- 0.7/0.0 | 285 | 142 | 125 | 1,30 |
| 1546-243 | T-Branch-200/200 | ø198.6 +/- 0.7/0.0 | ø198.6 +/- 0.7/0.0 | 267 | 133 | 123 | 1,10 |
| 1546-248 | T-Branch-250/100 | ø248.5 +/- 0.8/0.0 | ø 98.8 +/- 0.5/0.0 | 175 | 87 | 140 | 1,30 |
| 1546-249 | T-Branch-250/125 | ø248.5 +/- 0.8/0.0 | ø123.8 +/- 0.5/0.0 | 198 | 99 | 147 | 1,40 |
| 1546-250 | T-Branch-250/160 | ø248.5 +/- 0.8/0.0 | ø158.7 +/- 0.6/0.0 | 224 | 112 | 150 | 1,20 |
| n/a | T-Branch-250/180 | ø248.5 +/- 0.8/0.0 | ø178.6 +/- 0.7/0.0 | 306 | 153 | 150 | 1,70 |
| 1546-251 | T-Branch-250/200 | ø248.5 +/- 0.8/0.0 | ø198.6 +/- 0.7/0.0 | 306 | 153 | 150 | 1,80 |
| 1546-252 | T-Branch-250/250 | ø248.5 +/- 0.8/0.0 | ø248.5 +/- 0.8/0.0 | 317 | 158 | 152 | 1,65 |

T-Branch

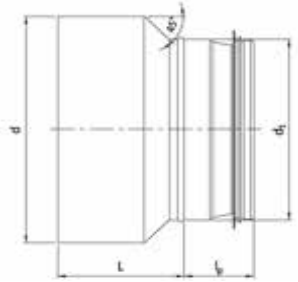
Dimensions

DESCRIPTION

- VTT SERT R022-04; ductwork for ventilation systems
- Air tightness-class C and D in accordance with NEN-EN 1507 and 12237
- M1 Cleanliness classification of air handling components
- DW-144 norm
- Luka norm
- SITAC norm

D1-Reducer socket/nipple, Uninsulated:

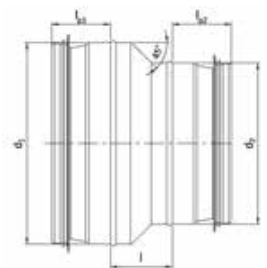
| Item no | Type | D1 | D2 | L | Kg |
|----------|------------|--------------------|--------------------|-----|------|
| 1546-602 | D1-100/080 | ø100.5 +/- 0.0/0.5 | ø 78.8 +/- 0.5/0.0 | 64 | 0,16 |
| 1546-603 | D1-125/080 | ø125.5 +/- 0.0/0.5 | ø 78.8 +/- 0.5/0.0 | 77 | 0,18 |
| 1546-604 | D1-125/100 | ø125.5 +/- 0.0/0.5 | ø 98.8 +/- 0.5/0.0 | 64 | 0,15 |
| 1546-605 | D1-160/100 | ø160.6 +/- 0.0/0.6 | ø 98.8 +/- 0.5/0.0 | 84 | 0,30 |
| 1546-606 | D1-160/125 | ø160.6 +/- 0.0/0.6 | ø123.8 +/- 0.5/0.0 | 69 | 0,20 |
| n/a | D1-180/100 | ø180.7 +/- 0.0/0.7 | ø 98.8 +/- 0.5/0.0 | 94 | 0,32 |
| n/a | D1-180/125 | ø180.7 +/- 0.0/0.7 | ø123.8 +/- 0.5/0.0 | 82 | 0,33 |
| 1546-608 | D1-180/160 | ø180.7 +/- 0.0/0.7 | ø158.7 +/- 0.6/0.0 | 64 | 0,32 |
| 1546-609 | D1-200/100 | ø200.7 +/- 0.0/0.7 | ø 98.8 +/- 0.5/0.0 | 104 | 0,39 |
| 1546-610 | D1-200/125 | ø200.7 +/- 0.0/0.7 | ø123.8 +/- 0.5/0.0 | 92 | 0,40 |
| 1546-611 | D1-200/160 | ø200.7 +/- 0.0/0.7 | ø158.7 +/- 0.6/0.0 | 74 | 0,37 |
| 1546-612 | D1-200/180 | ø200.7 +/- 0.0/0.7 | ø178.6 +/- 0.7/0.0 | 64 | 0,40 |
| 1546-613 | D1-250/125 | ø250.8 +/- 0.0/0.8 | ø123.8 +/- 0.5/0.0 | 127 | 0,56 |
| 1546-614 | D1-250/160 | ø250.8 +/- 0.0/0.8 | ø158.7 +/- 0.6/0.0 | 109 | 0,57 |
| n/a | D1-250/180 | ø250.8 +/- 0.0/0.8 | ø178.6 +/- 0.7/0.0 | 99 | 0,56 |
| 1546-615 | D1-250/200 | ø250.8 +/- 0.0/0.8 | ø198.6 +/- 0.7/0.0 | 89 | 0,55 |

D1

**Dimensions****D3-Reducer nipple/nipple, Uninsulated:**

| Item no | Type | D1 | D2 | L | Kg |
|----------|------------|--------------------|--------------------|----|------|
| 1546-541 | D3-100/080 | ø 98.8 +/- 0.5/0.0 | ø 78.8 +/- 0.5/0.0 | 28 | 0,16 |
| 1546-542 | D3-125/080 | ø123.8 +/- 0.5/0.0 | ø 78.8 +/- 0.5/0.0 | 41 | 0,18 |
| 1546-543 | D3-125/100 | ø123.8 +/- 0.5/0.0 | ø 98.8 +/- 0.5/0.0 | 30 | 0,17 |
| 1546-545 | D3-160/100 | ø158.7 +/- 0.6/0.0 | ø 98.8 +/- 0.5/0.0 | 48 | 0,30 |
| 1546-546 | D3-160/125 | ø158.7 +/- 0.6/0.0 | ø123.8 +/- 0.5/0.0 | 33 | 0,25 |
| n/a | D3-180/100 | ø178.6 +/- 0.7/0.0 | ø 98.8 +/- 0.5/0.0 | 58 | 0,32 |
| n/a | D3-180/125 | ø178.6 +/- 0.7/0.0 | ø123.8 +/- 0.5/0.0 | 46 | 0,33 |
| n/a | D3-180/160 | ø178.6 +/- 0.7/0.0 | ø158.7 +/- 0.6/0.0 | 28 | 0,32 |
| 1546-548 | D3-200/100 | ø198.6 +/- 0.7/0.0 | ø 98.8 +/- 0.5/0.0 | 68 | 0,39 |
| 1546-549 | D3-200/125 | ø198.6 +/- 0.7/0.0 | ø123.8 +/- 0.5/0.0 | 56 | 0,40 |
| 1546-550 | D3-200/160 | ø198.6 +/- 0.7/0.0 | ø158.7 +/- 0.6/0.0 | 37 | 0,35 |
| n/a | D3-200/180 | ø198.6 +/- 0.7/0.0 | ø178.6 +/- 0.7/0.0 | 28 | 0,35 |
| 1546-553 | D3-250/125 | ø248.5 +/- 0.8/0.0 | ø123.8 +/- 0.5/0.0 | 81 | 0,56 |
| 1546-554 | D3-250/160 | ø248.5 +/- 0.8/0.0 | ø158.7 +/- 0.6/0.0 | 63 | 0,57 |
| n/a | D3-250/180 | ø248.5 +/- 0.8/0.0 | ø178.6 +/- 0.7/0.0 | 53 | 0,56 |
| 1546-555 | D3-250/200 | ø248.5 +/- 0.8/0.0 | ø198.6 +/- 0.7/0.0 | 43 | 0,55 |

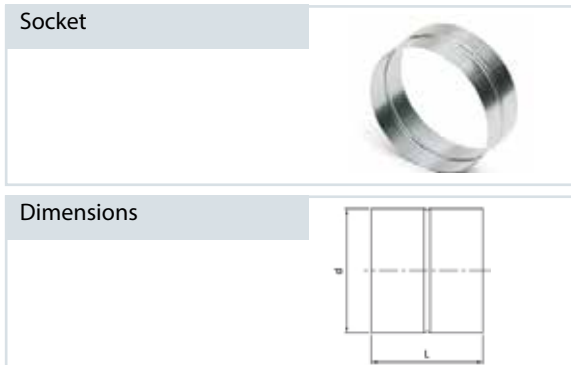
D3

**Dimensions****DESCRIPTION**

- VTT SERT R022-04; ductwork for ventilation systems
- Air tightness-class C and D in accordance with NEN-EN 1507 and 12237
- M1 Cleanliness classification of air handling components
- DW-144 norm
- Luka norm
- SITAC norm

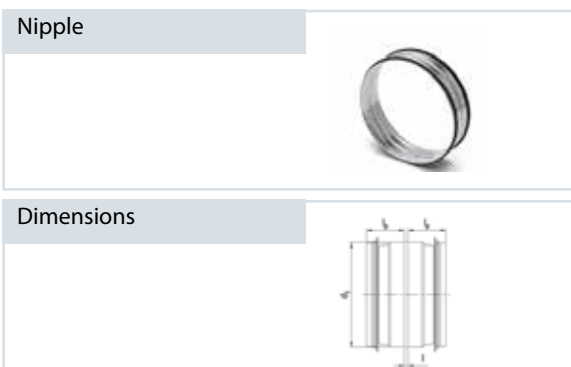
Socket for uninsulated duct work:

| Item no | Type | D | L | Kg |
|----------|-------|--------------------|-----|------|
| 1546-169 | M-080 | ø080.5 +/- 0.0/0.5 | 80 | 0,08 |
| 1546-170 | M-100 | ø100.5 +/- 0.0/0.5 | 80 | 0,10 |
| 1546-171 | M-125 | ø125.5 +/- 0.0/0.5 | 80 | 0,13 |
| 1546-172 | M-160 | ø160.6 +/- 0.0/0.6 | 80 | 0,16 |
| 1454-173 | M-180 | ø180.7 +/- 0.0/0.7 | 80 | 0,18 |
| 1546-173 | M-200 | ø200.7 +/- 0.0/0.7 | 80 | 0,20 |
| 1546-174 | M-250 | ø250.8 +/- 0.0/0.8 | 100 | 0,32 |



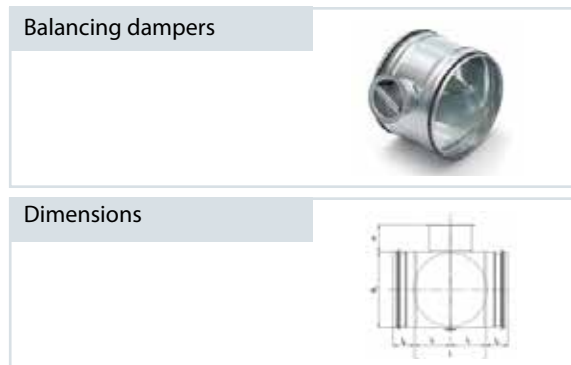
Nipple for uninsulated duct work:

| Item no | Type | D | L | Kg |
|----------|-------|--------------------|---|------|
| 1546-151 | N-080 | ø 78.8 +/- 0.5/0.0 | 8 | 0,08 |
| 1546-152 | N-100 | ø 98.8 +/- 0.5/0.0 | 8 | 0,10 |
| 1546-153 | N-125 | ø123.8 +/- 0.5/0.0 | 8 | 0,13 |
| 1546-154 | N-160 | ø158.7 +/- 0.6/0.0 | 8 | 0,16 |
| 1454-155 | N-180 | ø178.6 +/- 0.7/0.0 | 8 | 0,18 |
| 1546-155 | N-200 | ø198.6 +/- 0.7/0.0 | 8 | 0,20 |
| 1546-156 | N-250 | ø248.5 +/- 0.8/0.0 | 8 | 0,31 |



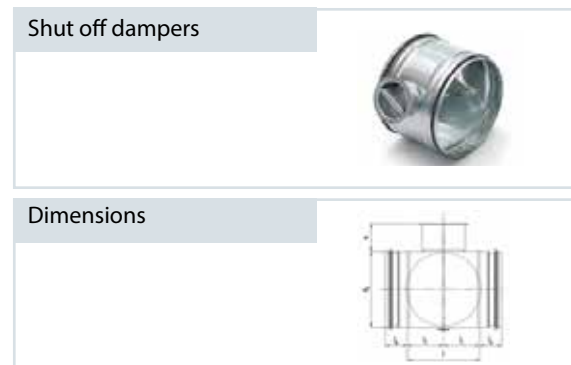
Dampers Class-1, Uninsulated:

| Item no | Type | D | L | L1 | Kg |
|----------|---------|--------------------|----|----|------|
| 1444-002 | P-1-080 | ø 78.8 +/- 0.5/0.0 | 88 | 44 | 0,40 |
| 1444-004 | P-1-100 | ø 98.8 +/- 0.5/0.0 | 88 | 44 | 0,45 |
| 1444-006 | P-1-125 | ø123.8 +/- 0.5/0.0 | 88 | 44 | 0,56 |
| 1444-008 | P-1-160 | ø158.7 +/- 0.6/0.0 | 88 | 44 | 0,70 |
| n/a | P-1-180 | ø178.6 +/- 0.7/0.0 | 88 | 44 | 0,84 |
| 1444-010 | P-1-200 | ø198.6 +/- 0.7/0.0 | 88 | 44 | 0,90 |
| 1444-012 | P-1-250 | ø248.5 +/- 0.8/0.0 | 88 | 44 | 1,05 |



Dampers Class-4, Uninsulated:

| Item no | Type | D | L | L1 | Kg |
|----------|---------|--------------------|----|----|------|
| 1444-022 | P-4-080 | ø 78.8 +/- 0.5/0.0 | 88 | 44 | 0,40 |
| 1444-024 | P-4-100 | ø 98.8 +/- 0.5/0.0 | 88 | 44 | 0,45 |
| 1444-026 | P-4-125 | ø123.8 +/- 0.5/0.0 | 88 | 44 | 0,56 |
| 1444-028 | P-4-160 | ø158.7 +/- 0.6/0.0 | 88 | 44 | 0,70 |
| n/a | P-4-180 | ø178.6 +/- 0.7/0.0 | 88 | 44 | 0,84 |
| 1444-030 | P-4-200 | ø198.6 +/- 0.7/0.0 | 88 | 44 | 0,90 |
| 1444-032 | P-4-250 | ø248.5 +/- 0.8/0.0 | 88 | 44 | 1,05 |



DESCRIPTION

- Balancing and shut-off dampers for all purposes in ventilation systems.
- Balancing dampers: to regulate the required airflow
- Shut-off dampers: for airtight isolation of ventilation systems
- Certification according to EN12237, VTT SERT R022-4 and DW144

General information

Ventistål Marine

- Market leader in Norway.
- Supplying the marine and offshore industry with ventilation and insulation products since 1992.
- Delivered spiro ducts and fittings to more than 400 vessels during the last 15 years.
- Subsidiary in Romania established in 2007
- A part of the Saint Gobain marine application group



Products

- Ventilation ducts
- Fans
- Air terminal devices
- Air handling units
- Fancoils
- Fire and gas dampers
- Kitchen ventilation
- Technical insulation

Ventiduct

Ventistål's preinsulated and uninsulated air pipe/duct work systems are produced according to standards, rules and regulations. The preinsulated circular ducts and fittings are made from galvanized steel sheet with a layer of 16mm mineral wool between. The steel sheet is described as DX51D+Z275 (275g/m² of zink) and accords to tolerance EN10327 and EN 10143. The insulation together with inner and outer skin provides an excellent guarantee against heat loss and condensation in the cooling periode. The fittings and pipes are ready for assembling as the fittings are supplied with sealing rubber-ring to ensure tightness.

Dimensions

The Ventistål ordering code always refer to the standard dimension aaa for the inner duct D1, called Dim. For reducer PF and T-branch PT it refers to D1 and D3, dimensions aaa and bbb, called Dim 1 and Dim 2

In addition to the standard products in this leaflet, we also deliver other dimensions on request.



"The insulation material is certified by Det Norske Veritas."

Ventistål, Marine Division

Ventistål Bergen, Sandbrekкетoppen 30, 5224 Nesttun, Norway

Phone: +47 970 87 100 | Mail: bergen@ventistal.no

Ventistål Haugesund, Raglamyrveien 19, 5536 Haugesund, Norway

Phone: +47 992 00 900 | Mail: haugesund@ventistal.no

Ventistål Stavanger, Brannstasjonsveien 25, 4312 Sandnes, Norway

Phone +47 516 04 010 | Mail: stavanger@ventistal.no

Ventistål Vinterbro (AirJet) Bilittveien 3, 1407 Vinterbro, Norway

Phone: +47 64 96 28 80 | Mail: vinterbro@ventistal.no

Ventistål Ålesund, Breivik Industrivei 41, 6018 Ålesund, Norway

Phone +47 70 17 91 50 | Mail: alesund@ventistal.no